

# MONTHLY MEMBERSHIP PROGRESS REPORT

District 105CE

Results as of: 5/31/2024

GMT:

LOCATION UNITED KINGDOM

GMT CA

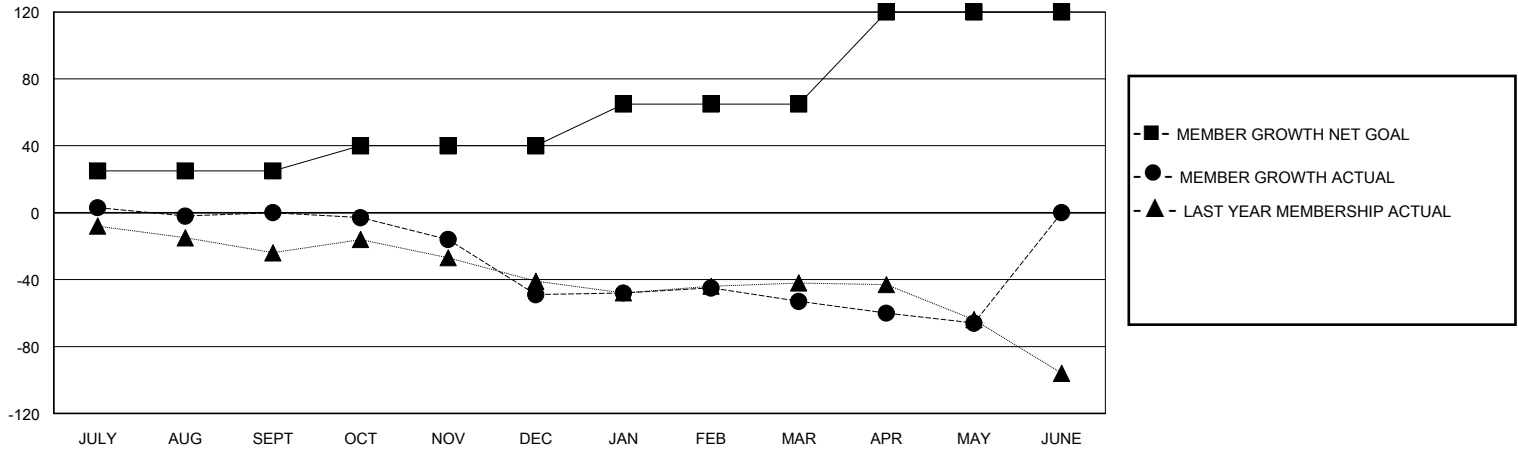
Clubs			
RESULTS FOR 2023-2024			
QUARTER	NEW CLUB GOAL	NEW CLUBS	DROPPED CLUBS
JULY/AUG/SEPT	0	0	0
OCT/NOV/DEC	0	0	1
JAN/FEB/MAR	0	0	2
APR/MAY/JUNE	1	0	0

Members			
RESULTS FOR 2023-2024			
QUARTER	MEMBER GROWTH NET GOAL	MEMBER GROWTH ACTUAL	DROPPED MEMBERS ACTUAL (including transfers)
JULY/AUG/SEPT	25	34	29
OCT/NOV/DEC	15	23	67
JAN/FEB/MAR	25	36	34
APR/MAY/JUNE	55	18	28

GOALS AND ACTUAL NEW CLUBS CUMULATIVE



GOALS AND ACTUAL MEMBERS CUMULATIVE



DROPPED CLUBS: 3	44 CLUBS OF 85 ADDED 1 OR MORE NEW MEMBERS	<b>GENDER DISTRIBUTION</b> MALE 995 (68.81%) FEMALE 451 (31.19%)
<b>DROPPED MEMBERS</b> DECEASED 26 CLUB CANCELLED 2 OTHER 130 TOTAL 158	<a href="#">CLICK HERE FOR CUMULATIVE MEMBERSHIP DATA</a>	TOTAL FAMILY UNIT MEMBERS 247 FAMILY MEMBERS PAYING HALF DUES 128